

## TOGGLE-IT SYSTEM



THE TOGGLE-IT SYSTEM is a wire suspension solution that incorporates a toggle that forms the termination point. The toggles are designed to span a through-hole of a ceiling material or fixture and have been manufactured to support a load.

### AVAILABILITY

Zip-Clip offer three different Toggle-It systems each allocated a letter to differentiate between the available safe working loads (SWL). Each systems comprises a specific diameter of wire rope and is supplied with the appropriate Zip-Clip locking device.

- PTEGK system – 15 kg SWL
- PTESK system – 35 kg SWL
- PTEYK system – 90 kg SWL

Toggle-It is available in drop lengths of 1 m to 10 m. Loads indicated are per individual wire support when coupled with the appropriate Zip-Clip locking device.

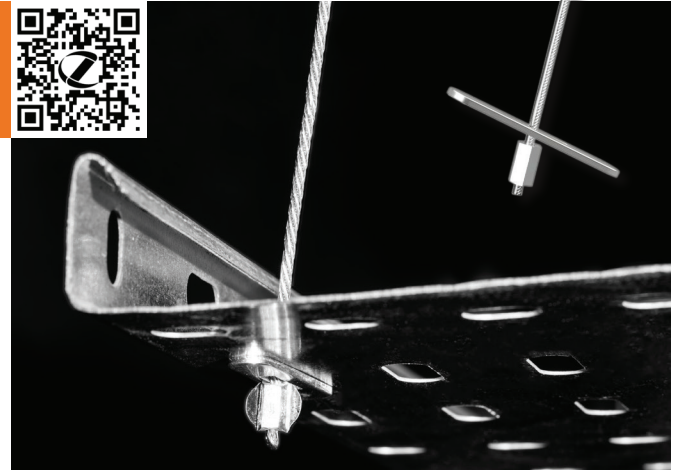
### APPLICATIONS

The Toggle-It range is designed for indoor applications. Regular galvanised systems should not be used in areas that have levels of corrosion or elevated levels of heat or moisture.

- Fixing to thin tin roofs or sheet metal that is approved to support a load.
- Supporting cable tray in tight void spaces, off-shoot or single runs of containment.
- Supporting wider cable trays.
- Lighting – Primary or secondary suspension.
- Plenum boxes.
- Chilled beams or radiant heat panels.
- Acoustic boards.

### FEATURES

- 18th Edition Amendment 2 : 2022 compliant.
- Austempered/heat treated steel toggle with an aluminium stop termination.
- Key-free release wire suspension for height adjustment – No tools required.
- High tensile galvanised steel wire rope.
- Systems can be inverted upside down – toggle can be attached to ceiling or application.



### INSTALLATION

**Concept** - Use the toggle termination to attach a wire suspension to the ceiling material or invert the suspension to attach to the intended application.

**Example installation attaching toggle termination to appropriate ceiling material:**

- The first step for installation process is to attach the wire support to the anchor point (ceiling).
- The second step in the installation process is to fit the Zip-Clip locking device and connect to the intended application.

#### The Toggle

**Note:** Toggle-It supports should be placed into through holes no bigger than 12 mm diameter.

- 1 Push the end stop of the wire suspension through the desired through-hole followed by the toggle.
- 2 Position toggle through 90° to span the hole, ensuring the toggle lies flat against the anchor point and equally overlaps the through-hole.

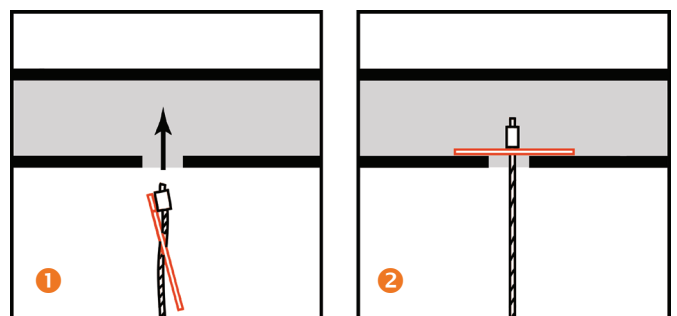
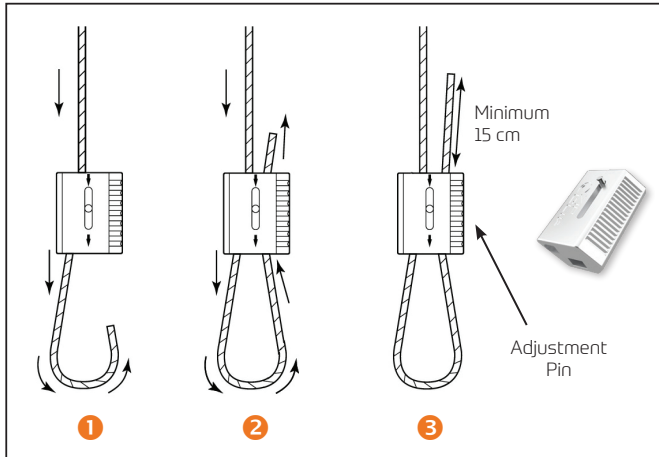


Illustration above shows installation into ceiling material.

## The Zip-Clip Locking Device

- 1 Pass the wire rope through the Zip-Clip device in the direction of the arrow.
- 2 Pass wire rope through or around your required fixture/application and back through the Zip-Clip leaving 15 cm of wire protruding.
- 3 Confirm engagement of the Zip-Clip on the wire by pushing the pin in the **opposite** direction to the arrows indicated.



## ADJUSTMENT

**Please note:** Before any adjustments can be made it is necessary to take all weight off the Zip-Clip device. It will not be possible to make adjustment if this is not done.

### To shorten the suspension:

1. Push the Zip-Clip device further up the live (load) wire – This will make the loop bigger.
2. Pull on the dead wire (exit tail) to make the loop smaller – This will shorten the suspension.
3. Trim the dead wire tail to minimum 15 cm or coil the wire neatly to allow for future adjustment.

### To lengthen the suspension:

1. Select the channel that holds the dead wire.
2. Make sure there is enough spare dead wire to allow for adjustment whilst maintaining an exit tail.
3. Push the adjustment pin in the direction of the arrow. This will release the dead wire (exit tail).
4. Allow the dead wire to feed back through the Zip-Clip. This will make the loop bigger.
5. Now select the channel that holds the live wire (load).
6. Push the adjustment pin in the direction of the arrow. This will release the live wire.
7. Allow the Zip-Clip to travel down the live wire. This will make the loop smaller.

## MATERIALS

### The Toggles:

Austempered mild steel, BZP finished.

Sizes Available			
	G-System	S-System	Y-System
Toggle	G-System	S-System	Y-System
Length (mm)	40.0	40.0	50.0
Width (mm)	5.0	8.0	9.5
Gauge (mm)	1.08	1.53	1.60
Slot length (mm)	20.0	15.0	25.0
Slot width (mm)	1.53	2.72	3.5

### Zip-Clip Devices:

Zamak zinc alloy main body with internal stainless steel spring and sintered steel locking wedge(s).

### Wire Rope:

Galvanised mild steel electro-galvanised wire rope, 1960 N/mm<sup>2</sup> grade, 7×7 IWRC construction, manufactured to BS EN 12385.

### Swages (also known as Ferrules):

Manufactured from seamless aluminium tube, finished in-house utilising a 25T cylindrical press die with cutting edge. Compliant with BS EN 13411-3 and suitable for wire ropes manufactured to BS EN 12385.

## MANUFACTURERS RECOMMENDATIONS

The Zip-Clip Toggle-It system is designed to support **STATIC loads only**. Dynamic and shock loads must be avoided and can greatly increase the overall weight of the product being suspended and therefore compromise the Safe Working Load of the suspension. To ensure integrity and safety of the system only Zip-Clip wire should be used.

- Do not exceed the Safe Working Load (SWL) of the product.
- Do not use locking devices with a coated wire.
- Do not paint or apply any other coating.
- Do not lubricate.
- Do not use for lifting applications.
- Remove any frayed cable prior to inserting into the locking devices.
- Do not shock load.
- Do not use for dynamic loads/installations.
- Do not overload.
- Do not mix Zip-Clip systems with other wire suspension manufacturers products.
- Do not use in corrosive environments, e.g. chlorinated environments – For specialist applications, such as corrosive environments, please contact Zip-Clip Technical Department.



For further information on Zip-Clip suspension solutions, for technical or sales enquiries, contact us on Tel: +44 (0)1686 623366 • Email [info@zip-clip.com](mailto:info@zip-clip.com)